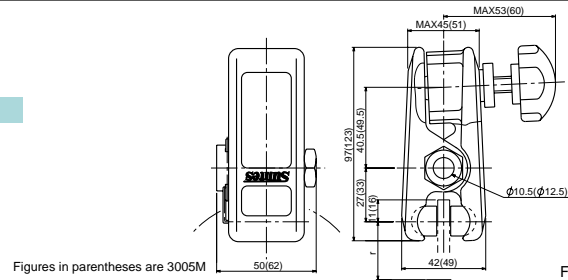


## Knob Operated DB-3004M - 3005M

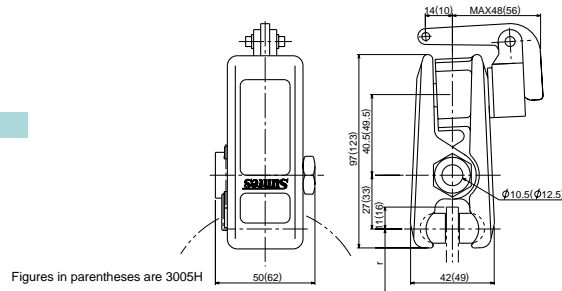


For detail refer page 1.

## Lever Operated DB-3004H - 3005H

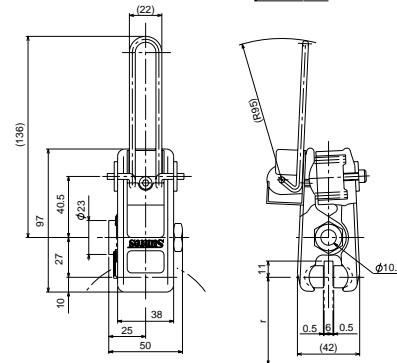
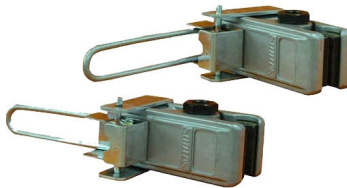


DB-3004H



For detail refer page 2.

## Spring Applied Lever Release DB-3004H-101

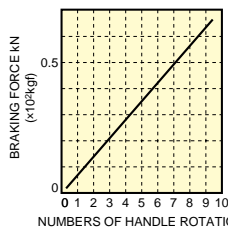


For detail refer page 2.

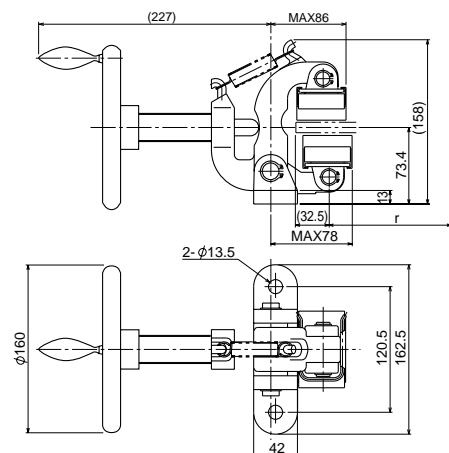
## Handle Operated DB-3012M



### ● CHARACTERISTIC CURVE



• COEFFICIENT OF DYNAMIC FRICTION 0.3



### ● SPECIFICATION

• MODEL TYPE	DB-3012M
• USABLE DISC DIA (mm)	$\phi 200 - \infty$
• DISC THICKNESS (mm)	10.4
• EFFECTIVE RADIUS OF BRAKING (m)	$r = \frac{1}{1000} \left( \frac{\text{DISC DIA}}{2} - 32.5 \right)$
• PAD MODEL TYPE	DB-0433-K※※※
• WEAR ALLOWANCE OF PAD (mm)	7
• WEIGHT (kg)	6.5
• TORQUE CALCULATION (BRAKING FORCE=kN)	$T (\text{kN} \cdot \text{m}) = \text{kN} \times r$

Pad for only holding (static  $\mu$ ) is available for application for holding brake.